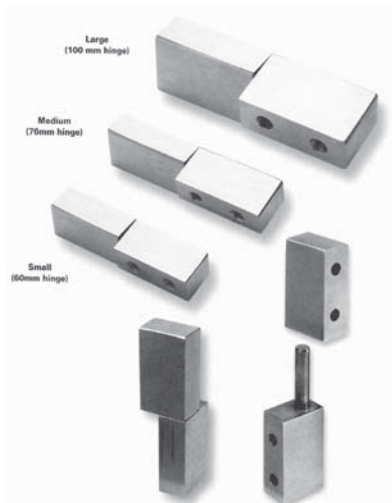


## Stainless Block Hinges For Offset Doors



These machined block hinges suit high-quality cabinets and enclosures, where stainless steel fittings are required to prevent problems with corrosion, staining and binding-up, which can occur in damp or chemically active environments.

Produced in three standard sizes, the hinges have a ground satin finish and are lubricated with light oil for smooth action. They are exact alternatives to our die-cast 'block' hinges.

### 2.9/01289

Stainless block hinge, 60mm.

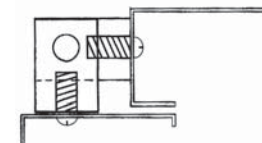
### 2.9/01290

Stainless block hinge, 76mm.

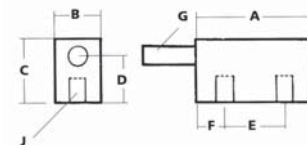
### SPECIFICATION

All corners have a radius and edges are chamfered

	60mm	76mm
<b>A</b> Length (half)	32mm	38mm
<b>B</b> Width	13mm	13mm
<b>C</b> Height	16mm	19mm
<b>D</b> Height to pin	9.5mm	13mm
<b>E</b> Location	16mm	19mm
<b>F</b> Location	8mm	9mm
<b>G</b> Pin diameter	6mm	6mm
<b>H</b> hole size	6mm x M5	7.5mm x M6

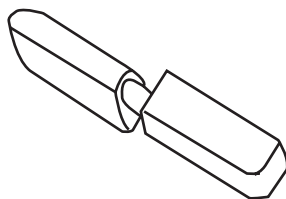


Fitting and operation of 'block' hinges on externally mounted doors.



## Pintle Hinges

### 2.1325



### 2.1325

Length 102mm height 19mm width 16mm.

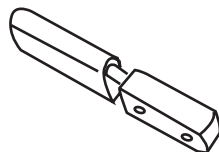
Pin size: 0.95.

Material: Zinc alloy.

Finsih: Chrome plated.

Thread Size M6 35mm hole centres each half.

### 2.1327



### 2.1327

Length 50.8mm, height 9.5mm width 16mm.

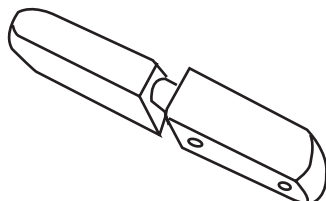
Pin size: 0.95.

Material: Brass/Stainless steel Pin.

Finsih: Chrome plated.

Thread Size M4 12.7mm hole centres each half.

### 2.1328



### 2.1328

Length 102mm, height 9.5mm width 16mm.

Pin size: 0.60.

Material: Brass/Stainless steel Pin.

Finsih: Chrome plated.

Thread Size M6 12.7mm hole centres each half.



HEAD OFFICE  
T: +61 02 8887 1200  
F: +61 02 8887 1249  
E: export@uesint.com

NEW SOUTH WALES  
T: +61 02 8787 6500  
F: +61 02 8787 6599  
E: uesnsw@uesint.com

QUEENSLAND  
T: +61 07 3623 5800  
F: +61 07 3865 5605  
E: uesqld@uesint.com

VICTORIA  
T: +61 03 8787 3100  
F: +61 03 8787 3101  
E: uesvic@uesint.com

SOUTH AUSTRALIA  
T: +61 08 8340 1599  
F: +61 08 8340 4423  
E: uessa@uesint.com

WESTERN AUSTRALIA  
T: +61 08 9249 2211  
F: +61 08 9249 2022  
E: ueswa@uesint.com

NORTHERN TERRITORY  
T: +61 08 8946 4500  
F: +61 08 8946 4555  
E: uesnt@uesint.com

NEW ZEALAND  
T: +64 09 633 4019  
F: +64 09 633 0249  
E: uesnz@uesint.com