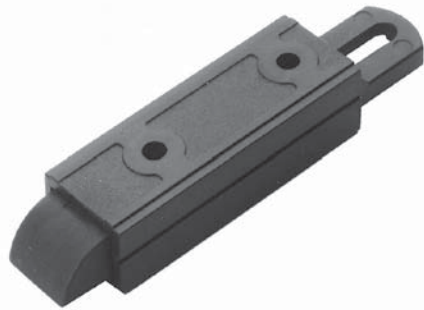


Moulded Slam



The unique design of these latches allows 'fix through' mounting to suit narrow door pillars, sections and channels. Moulded construction provides the benefits of light weight, self-lubricating action, and total corrosion resistance at an inexpensive price.

Note: Knob & rivet can be supplied loose, for assembly after latch is installed in panel.

4.9/01530

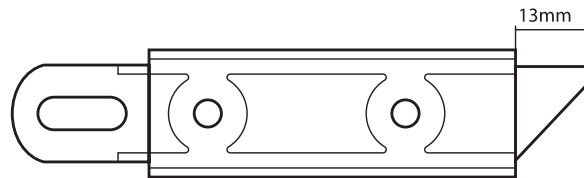
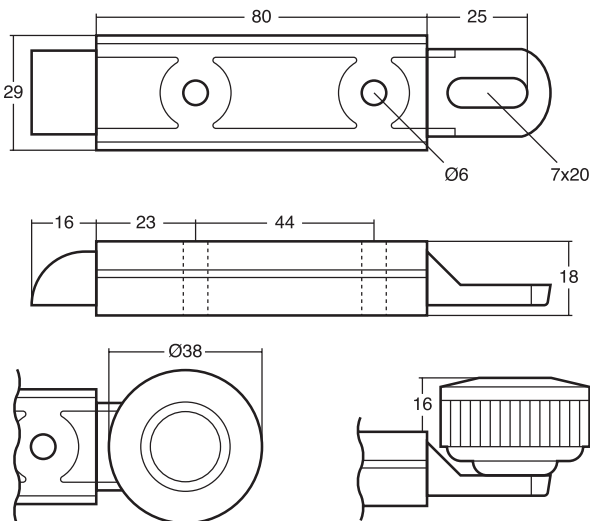
Moulded Slam.

4.9/01529

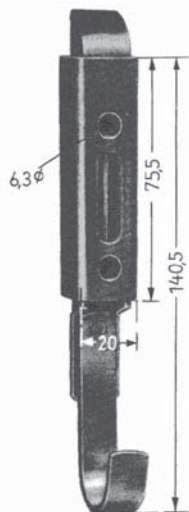
Moulded Slam Latch, pulled knob fitment.

4.9/01528

Moulded slam Latch, reversed knob.



Special model with side-action bolt, suitable for roller shutters, etc.



4.602-0138

Spring catch Galvanised Steel (less hook handle).

4.602-0141

Spring catch galvanized steel. Weight: 180g/each. (as illustrated).

