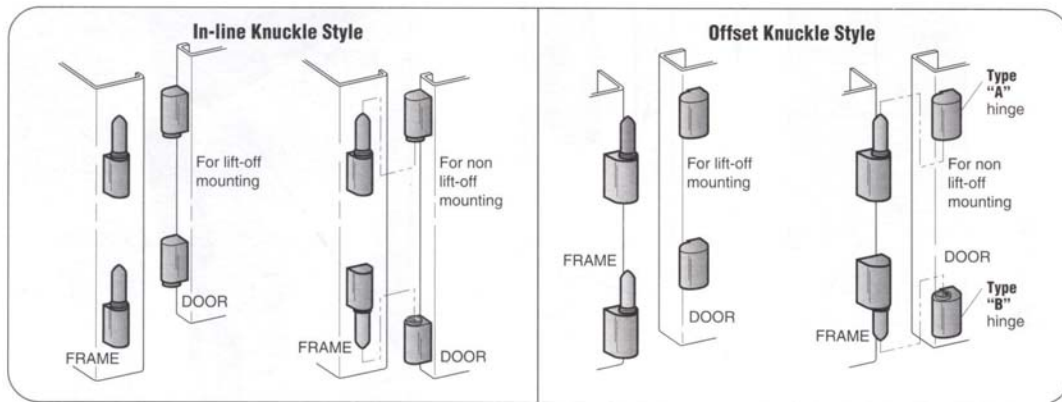
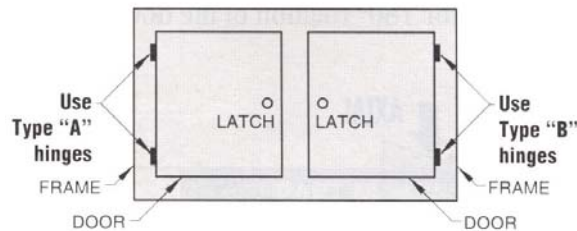


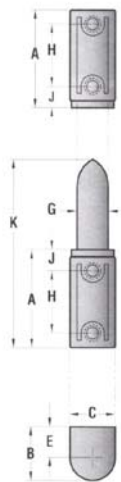
# Pin Hinges – Medium/Large Size, Nylon

- Allows the door to be removed from the hinge side.
- Corrosion-resistant materials.
- Provides for permanent door installation.



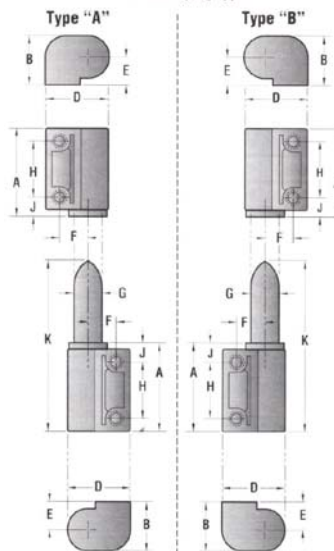
### IN-LINE KNUCKLE STYLE

Free-swinging type



### OFFSET KNUCKLE STYLE

Free-swinging type



Dimensions									Part Numbers		
Screw Thread Size	A	B	C	D	E,F & G	H	J	K	In-line Knuckle Style	Offset Knuckle Style	
										Type 'A'	Type 'B'
<b>300 Series</b> M5	31	16,7	14,3	21,5	9,5	19	7	58	<u>2.96-50-300-11</u>	<u>2.96-50-310-11</u>	<u>2.96-50-320-11</u>
<b>400 Series</b> M6	41,	22,2	19	28,5	12,7	25,5	9,5	78	<u>2.96-50-400-11</u>	<u>2.96-50-410-11</u>	<u>2.96-50-420-11</u>

