

Anti Burst Locks

This system is ideal for use on any door, especially tractor cabs, etc.



Push button handle, random keyed in pairs.

This handle is made from a very tough plastic and operates by pressing the push button which in turn depresses the lock paddle which then opens the lock rotor. It is fitted by three screws from the inside of the cab door, and is lockable by means of a double sided key. The latter has extra protection by way of a dust cover. This handle is primarily used in conjunction with the following anti burst locks:

4.9300/001

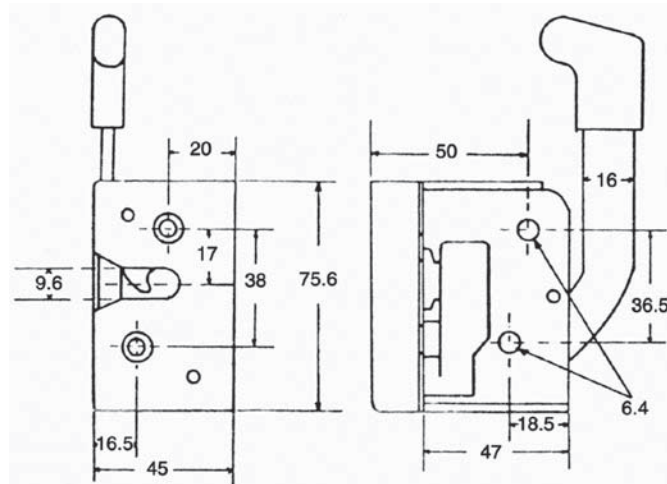
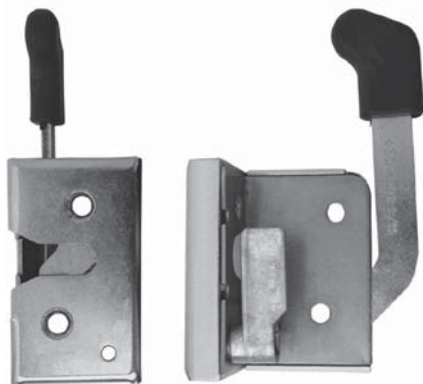
Push button handle, random keyed in pairs.

4.9301/S

Striker pin.

4.9300/002

Push button handle, keyed alike.



Anti burst type cab door lock

This door lock is an anti burst type lock and is operated by the above push button handle as well as its own inside integral lever handle, which can very easily be turned into remote operation, and is supplied complete with striker pin 9301/S.

4.9301/001

Anti burst type cab door lock left handed.

4.9301/002

Anti burst type door right handed (Illustrated).

